

**FOR SALE**

## **PIETRYK DRIVE LAND**

Salisbury, NC 28146

**±59 ACRES**



### **PROPERTY HIGHLIGHTS**

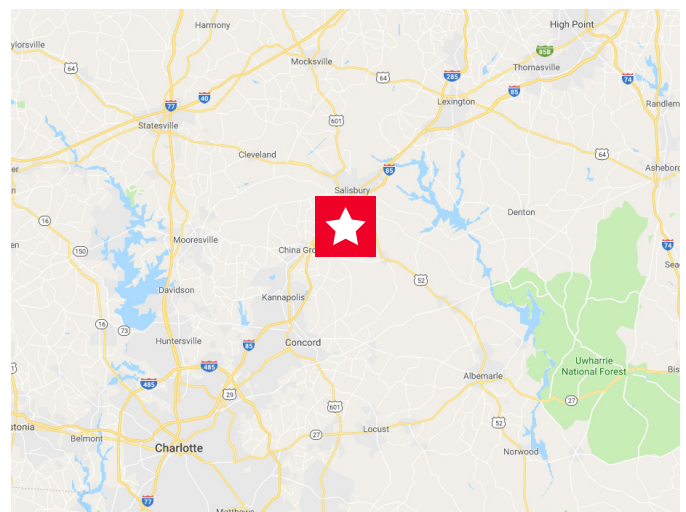
- 4 parcels totaling ±59 acres
- Zoning: CBI
- Direct access to I-85
- Located within Rowan County

Parcel ID: 410001

Parcel ID: 410124

Parcel ID: 410112

Parcel ID: 410029



#### **PATRICK MCGRATH**

Senior Associate

+1 704 887 3038

patrick.mcgrath@cushwake.com

#### **MATT TREBLE**

Director

+1 704 335 4430

matt.treble@cushwake.com



**CUSHMAN &  
WAKEFIELD**

cushmanwakefield.com



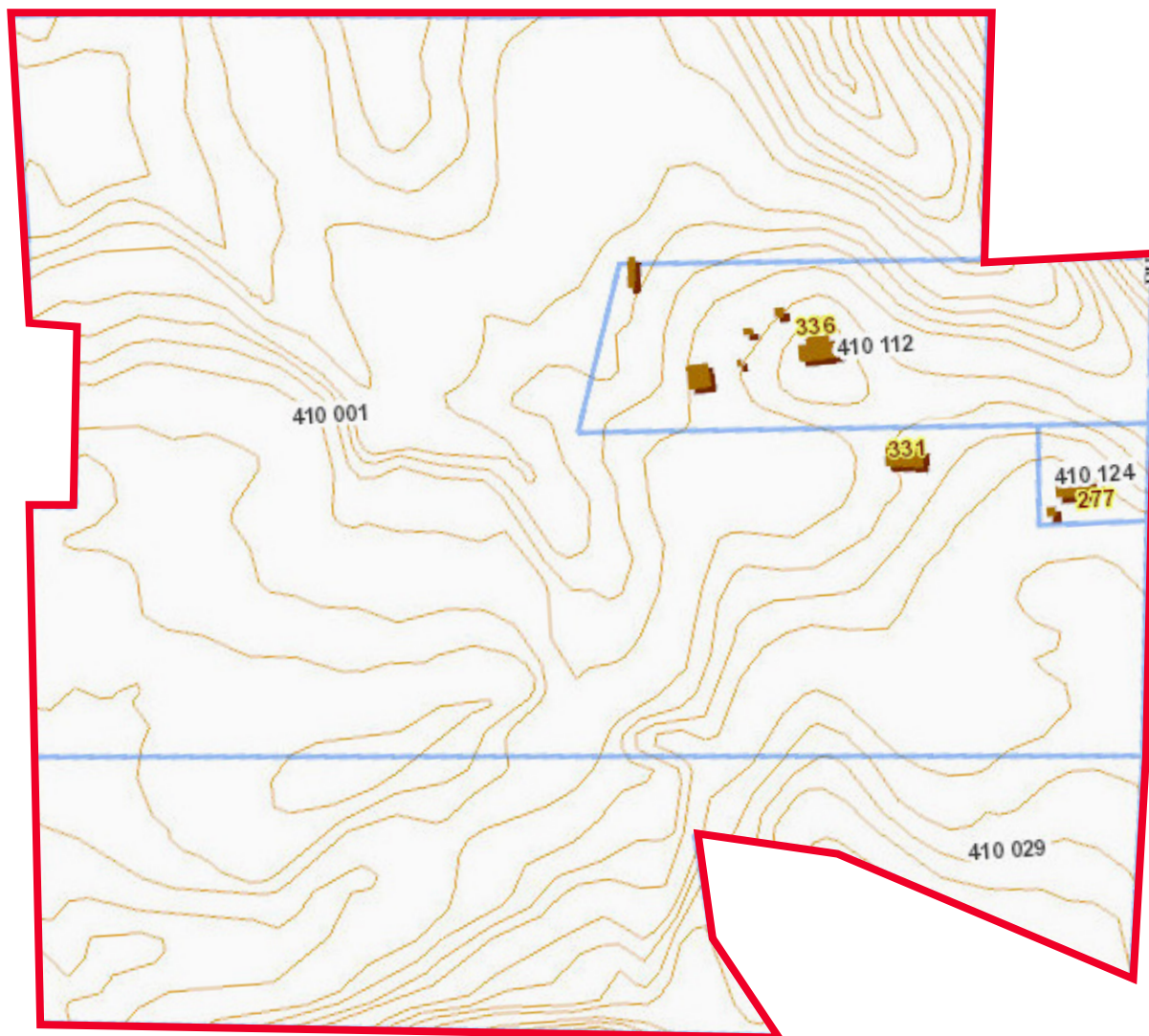
# PIETRYK DRIVE LAND

Salisbury, NC 28146

±59 ACRES

FOR SALE

## TOPO MAP



- 2' Contour Intervals
- Topo Gently Rolling



**CUSHMAN &  
WAKEFIELD**

[cushmanwakefield.com](http://cushmanwakefield.com)

©2019 Cushman & Wakefield. All rights reserved. The information contained in this communication is strictly confidential. This information has been obtained from sources believed to be reliable but has not been verified. No warranty or representation, express or implied, is made as to the condition of the property (or properties) referenced herein or as to the accuracy or completeness of the information contained herein, and same is submitted subject to errors, omissions, change of price, rental or other conditions, withdrawal without notice, and to any special listing conditions imposed by the property owner(s). Any projections, opinions or estimates are subject to uncertainty and do not signify current or future property performance.



# PIETRYK DRIVE LAND

Salisbury, NC 28146

±59 ACRES

FOR SALE

## PRELIMINARY SITE PLAN



Can accommodate up to:

- Building SF: 667,000 (580' x 1,150')
- Car Parking: 455
- Trailer Parking: 231 (108 of those in the separate trailer lot)



**CUSHMAN &  
WAKEFIELD**

[cushmanwakefield.com](http://cushmanwakefield.com)

©2019 Cushman & Wakefield. All rights reserved. The information contained in this communication is strictly confidential. This information has been obtained from sources believed to be reliable but has not been verified. No warranty or representation, express or implied, is made as to the condition of the property (or properties) referenced herein or as to the accuracy or completeness of the information contained herein, and same is submitted subject to errors, omissions, change of price, rental or other conditions, withdrawal without notice, and to any special listing conditions imposed by the property owner(s). Any projections, opinions or estimates are subject to uncertainty and do not signify current or future property performance.