



BLACK CREEK® GROUP

CREEKSIDE COMMERCE CENTER

7045 LOGISTICS CENTER DRIVE, BUILDING 1, CHARLOTTE, NC 28273

FOR LEASE | 39,466 - 223,692 SQ FT | Class A Warehouse Facility



BRAD CHERRY, CCIM, SIOR

650 S. Tryon Street, Ste 600
Charlotte, NC 28202
704-927-3013
brad.cherry@jll.com

SPENCER YORKE

650 S. Tryon Street, Ste 600
Charlotte, NC 28202
704-927-3004
spencer.yorke@jll.com

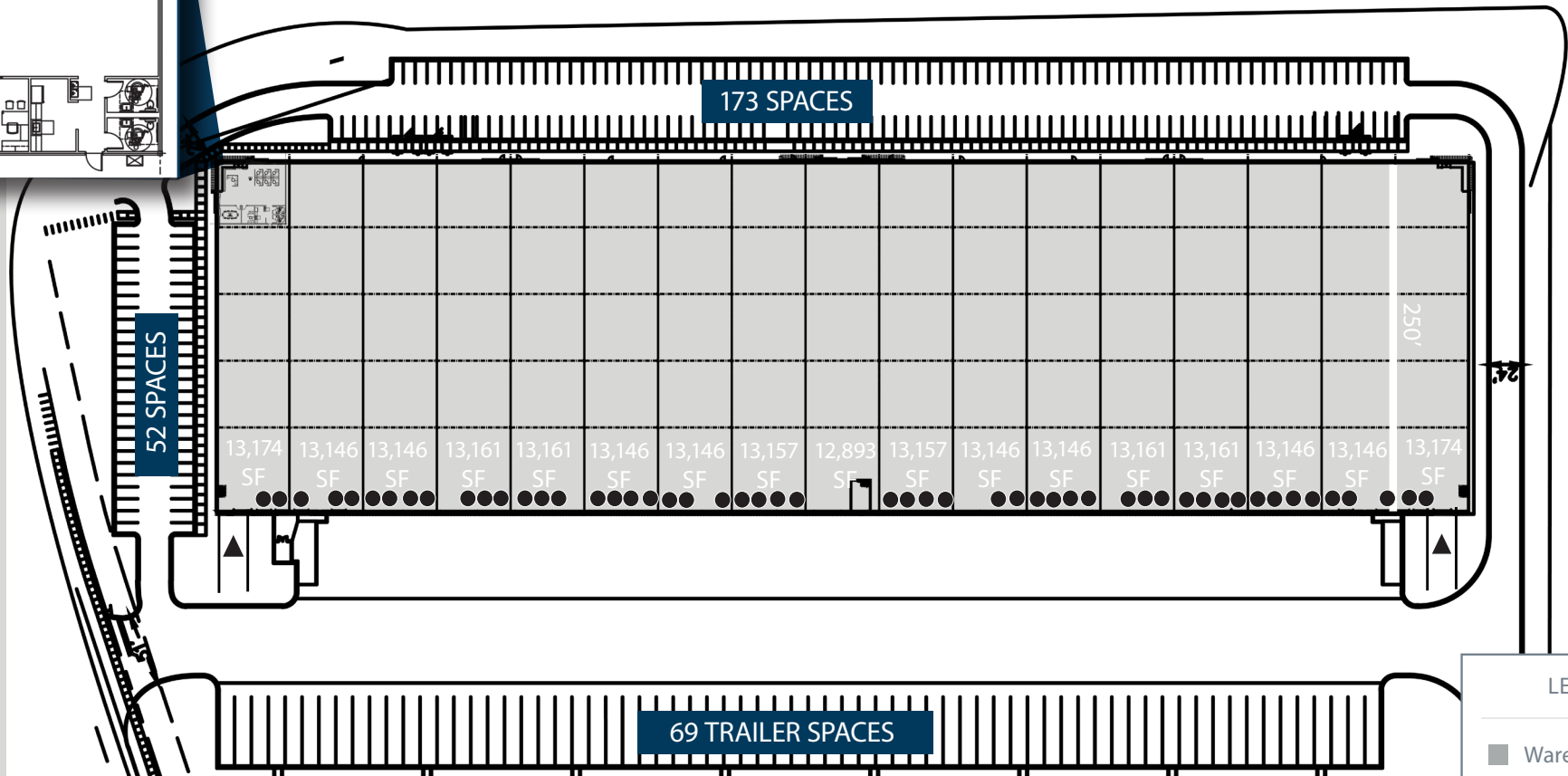
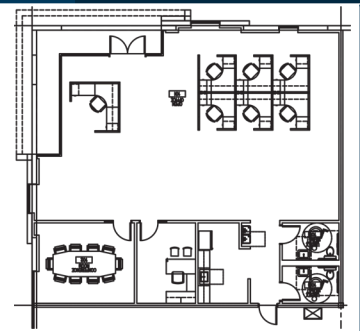
DEVELOPED BY



BLACK CREEK® GROUP

Property FEATURES

- Total SF: 39,466-223,692
- Spec Office SF: 2,526
- Depth: 250'
- Auto parking: 225
- Trailer parking: 69
- Clear Height: 32'
- Dock high doors: 52 (9' x 10')
- Drive in doors: 2 (12' x 14')
- Truck court: 180'
- Speed bay: 60'
- Column spacing: 52'7" x 47'6"
- Single story
- Front park and Rear load
- 60 mil white TPO roof system
- ESFR sprinkler systems

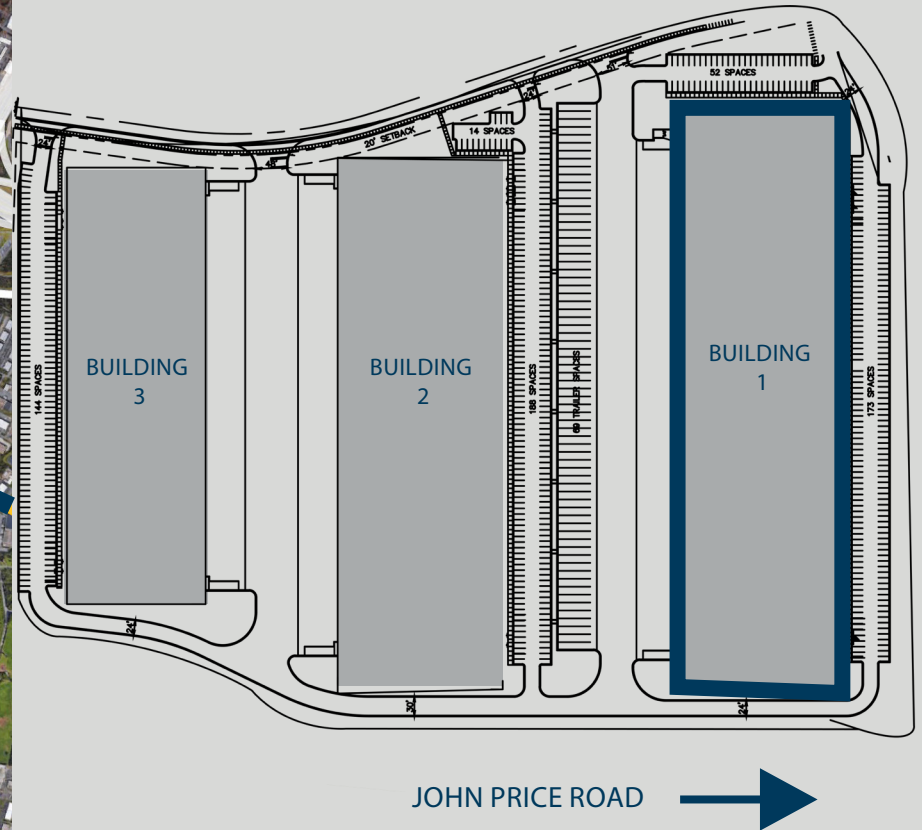
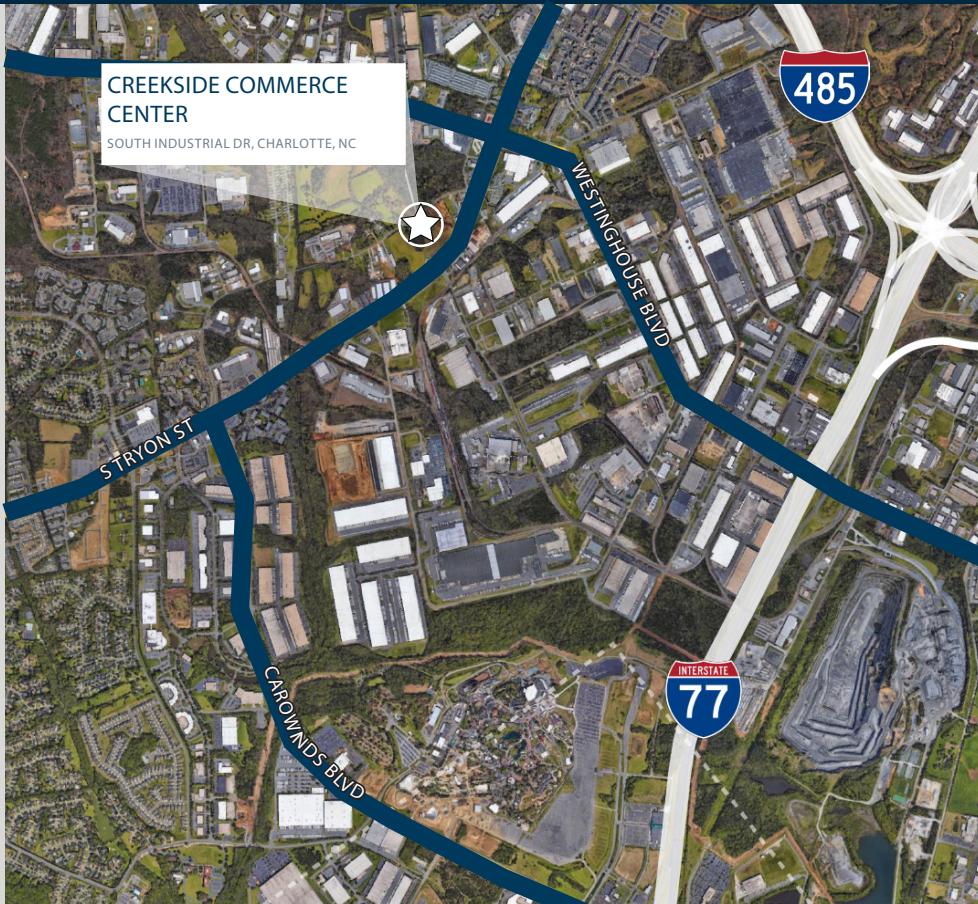


LEGEND

- Warehouse
- ▲ Drive In Doors
- Dock Doors

Location HIGHLIGHTS

- Located in the Westinghouse Submarket
- Approx. 2 miles to I-485
- Approx. 2 miles to I-77
- Approx. 10 miles to I-85
- Approx. 10 miles to Charlotte Int'l Airport



ABOUT BLACK CREEK GROUP

Black Creek Group is an experienced real estate investment management and development firm that has bought or built over \$19 billion of investments over its 25-year history. The firm manages diverse investment offerings across the spectrum of commercial real estate — including office, industrial, retail and multifamily — providing a range of investment solutions for both institutional and wealth management channels. Black Creek Group has nine offices across North America with more than 300 professionals. More information is available at www.blackcreekgroup.com.



BRAD CHERRY, CCIM, SIOR
650 S. Tryon Street, Ste 600
Charlotte, NC 28202
704-927-3013
brad.cherry@jll.com

SPENCER YORKE
650 S. Tryon Street, Ste 600
Charlotte, NC 28202
704-927-3004
spencer.yorke@jll.com

DEVELOPED BY



BLACK CREEK® GROUP